

# Type DR

Steam pressure reduction valve



> Type DR, front view



> Type DR, sectional view

## Product features

- Customised, high-quality steam pressure valve with cage-guided perforated bushing in a single-stage or multi-stage design
- For the best handling of difficult operating conditions with high grade pressure control
- Low-noise, multi-stage design of the throttle body (perforated bushing)
- Screwed cover or self-sealing design

## Applications

- Reduction of steam pressure in energy and process engineering for controlling high-pressure

# Type DR

## Steam pressure reduction valve

### Technical data

Nominal diameter	DN 50–1200 / NPS 2–48
Pressure class	PN 16–640/Class 150 –4500
Temperature (max.)	650 °C / 1200 °F
Housing material	1.0460 / A105 1.5415 1.7335 / A182F12Cl.2 1.7383 / A182F22Cl.3 1.4903 / A182F91
Housing type	Forged
Media	Superheated steam
Flanges	EN 1092-1, ASME B16.5, ISO 7005, JIS, JPI, welding ends on request
Designs	Angle type, globe type
Actuators	Pneumatic, electric, hydraulic
Number of stages (max.)	9
Number of controlled stages (max.)	4
Operating range (max.)	1:50

# Type DR

## Steam pressure reduction valve

### SCHROEDAHL develops and produces high-quality and individually configured steam pressure reduction control valves

We develop steam pressure reduction valves, which are precisely adapted to the requirements in power plant- or industrial processes. SCHROEDAHL single and multi-stage solutions cover all pressure ranges, mounting situations and nominal widths.

Based on the process data, we supply our customers with tailor-made control valves for the optimum operation of their plant. You can benefit from our extensive experience and engineering at the highest level.

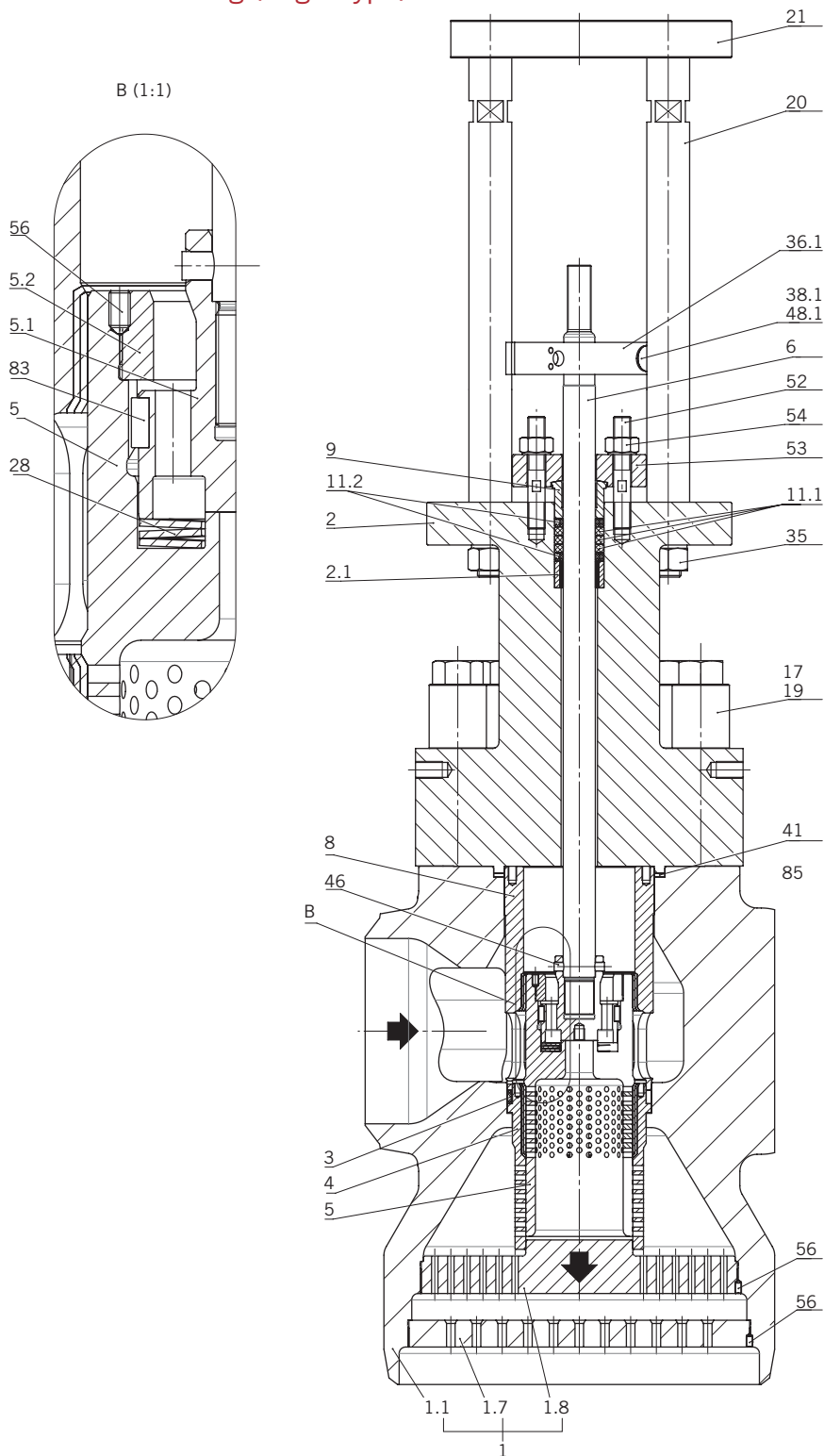
SCHROEDAHL steam pressure reduction control valves are high-quality products that are fully function-optimized through continuous further development. It was possible to minimize the actuator forces even during high pressure applications, which in turn leads to the use of smaller and cost-saving actuators.

The internal construction is designed for low noise operation, which guarantees environmentally-friendly handling. Forged housings combined with a consistent, well thought-out engineering ensures a strong, durable and resistant quality.

# Type DR

Steam pressure reduction valve

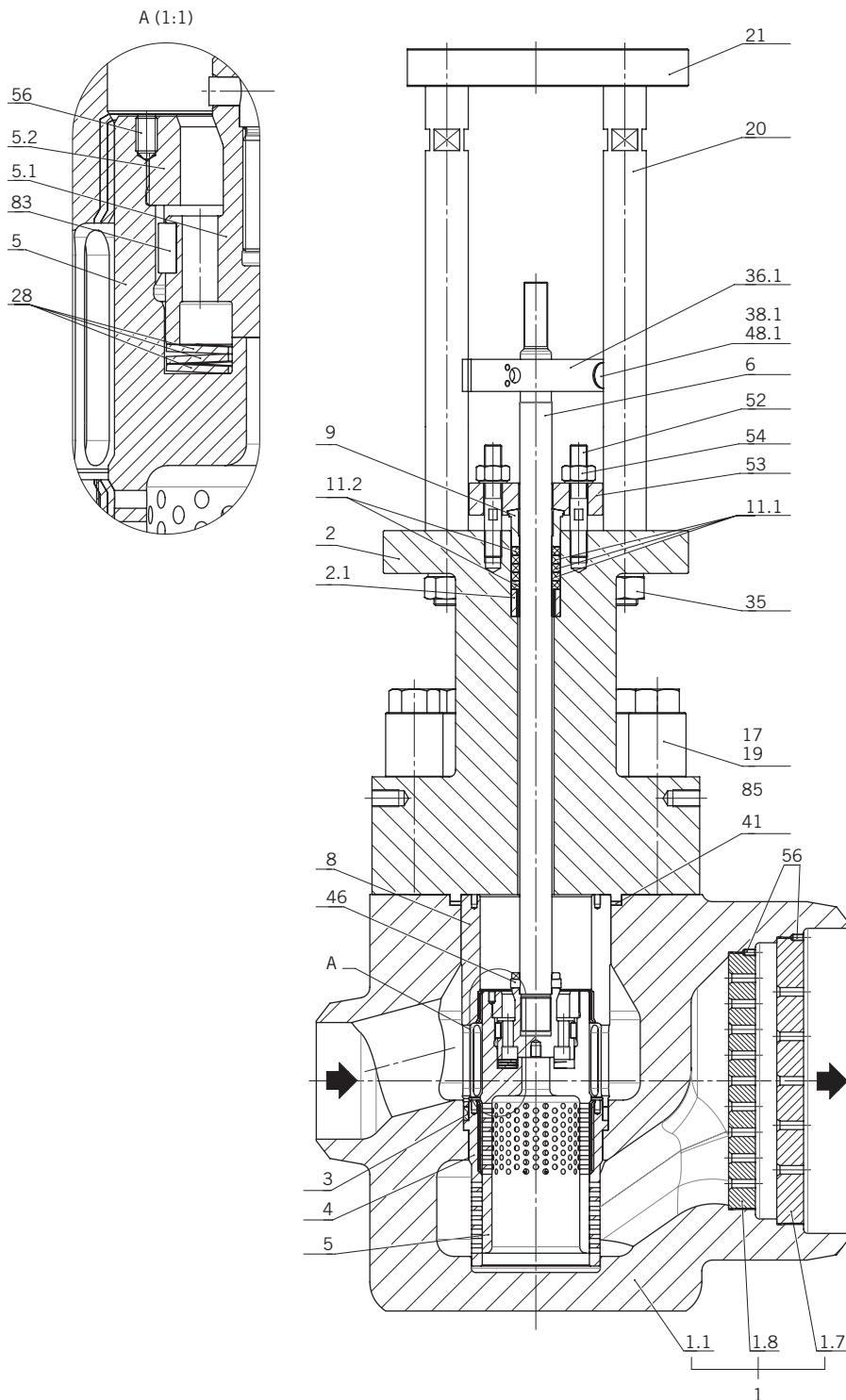
Sectional drawing (angle type)



# Type DR

Steam pressure reduction valve

Sectional drawing (globe type)



# Type DR

## Steam pressure reduction valve

### Parts list (angle type, globe type)

Pos.	Item	Material
1	Housing cpl.	*
1.1	Housing	*
1.7	Orifice	*
1.8	Perforated bushing	*
2	Cover	*
2.1	Bushing	**
3	Profile ring	Grafit
4	Seat bushing	**
5	Valve plug	1.4903/A182F91
5.1	Pilot plug	2.4668
5.2	Ring	1.4903/A182F91
6	Valve spindle	1.4922
8	Bushing	**
9	Packing follower	1.4122
11.1	Packing	Grafit
11.2	Packing	Grafit
17	Capped nut	**
19	Bolt	**
20	Spacer bolt	**
21	Flange	1.0460/A105
28	Washer	2.4668
35	Hexagon nut	1.4923
36.1	Bridge	1.4571
38	Socket head screw	8.8
41	Spiral gasket	1.4541/Grafit
46	Pin	1.4301
48	Lock washer	1.1211
52	Stud bolt	**
53	Gland plate	*
54	Hexagon nut	*
56	Threaded pin	A4
83	Parallel key	1.0540

\* See table "Technical data"

\*\* Depending on customer requirements

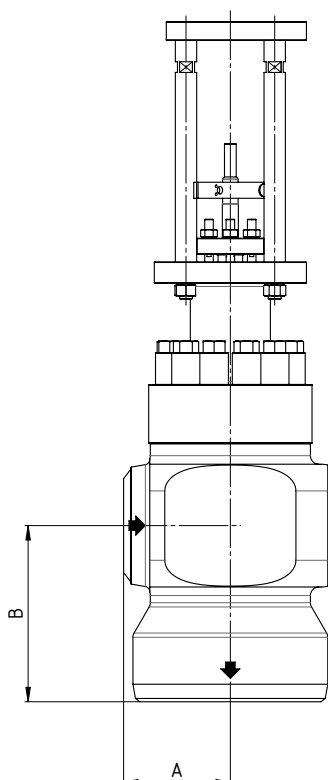
Parts list as an example of the standard configuration

# Type DR

Steam pressure reduction valve

## Dimensions (angle type)

Seat- $\varnothing$ (mm)	Measures A (mm)	Measures B (mm)	Weight (kg)
40	125	150	120
50	130	175	200
65	140	200	250
80	170	250	350
100	185	300	550
125	210	400	700
150	240	475	1000
180	250	550	1400
210	250	725	1800
250	275	850	2200



# Type DR

Steam pressure reduction valve

## Dimensions (globe type)

Seat- $\varnothing$ (mm)	Measures A (mm)	Weight (kg)
40	275	130
50	300	225
65	350	275
80	425	385
100	475	600
125	600	775
150	725	1100
180	800	1500
210	975	2000
250	1125	2400

