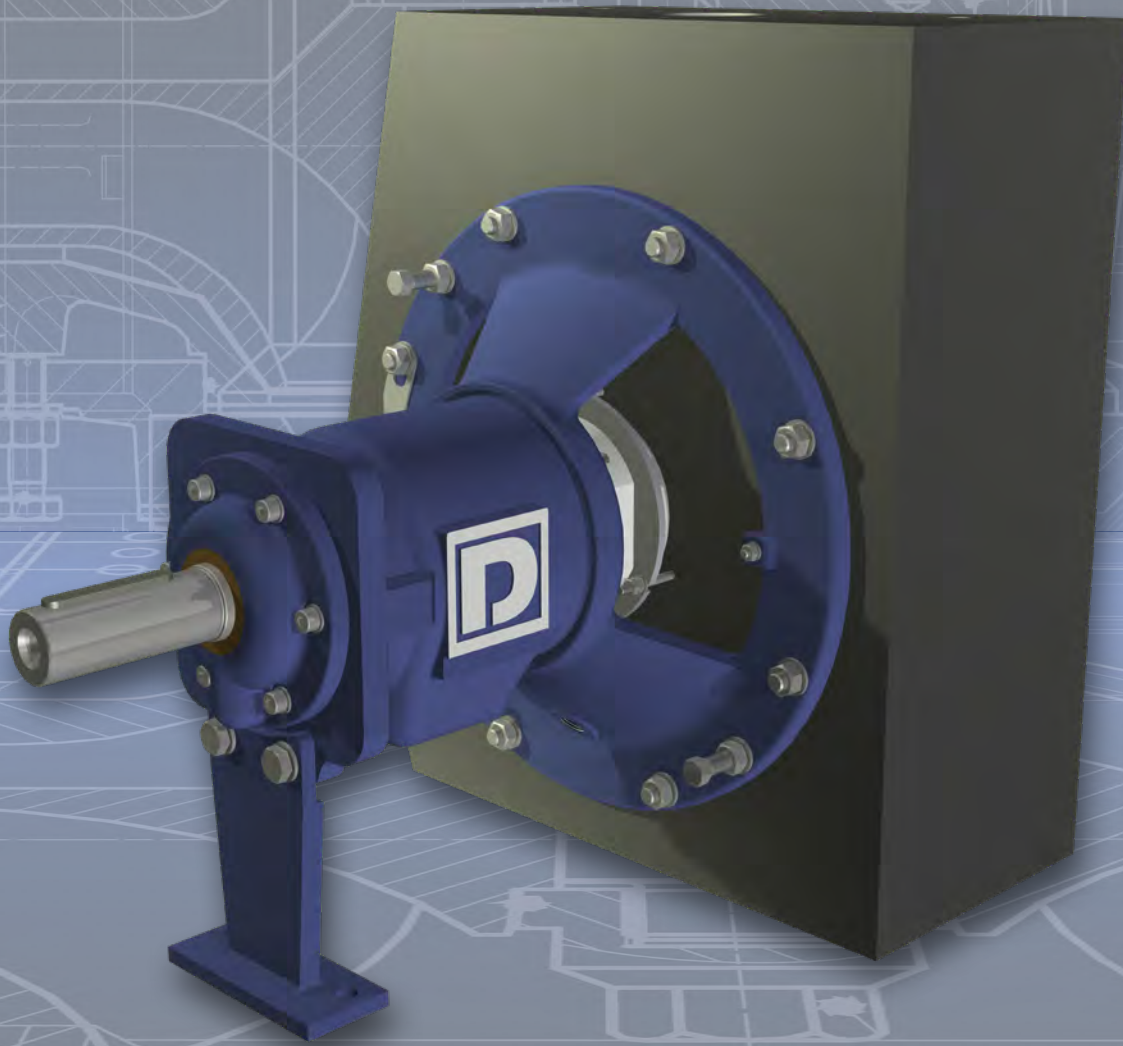




DÜCHTING
PUMPEN

Product Overview
TYPE MC



FLUE GAS DESULFURIZATION



The flue gas cleaning in Germany started with the adoption of the „Großfeuerungsverordnung“ - a regulation for open fire - in 1982. From the very beginning DÜCHTING PUMPEN took part in this business and today has one of the largest populations in European power stations. With the development of the material **SICcast**[®] now almost every FGD pump is built completely in **SICcast**[®]. Through this unique and innovative technology our products are increasingly favored beyond the borders of Europe.

WATER TREATMENT



DÜCHTING PUMPEN has worked in desalination with high-pressure centrifugal pumps in reverse osmosis now since the early 90s. While the demand for higher quantities and pressures has risen over the past years DP has kept up with the development and can now offer high-pressure pumps, including energy recovery units. The materials used for these pumps have been proven in numerous applications and the performance data has been adjusted to market demands by means of CFX programs.

MINING



Since the early 50s DÜCHTING has supplied pumps to the mining industry, especially German hard coal mining - at first only as maintenance and primarily with respect to underground mining. In the following years new pumps and wear-resistant centrifugal pumps for the processing of coal were added. Today DÜCHTING PUMPEN covers the entire market for centrifugal pumps in mining including high-pressure cooling centrifugal pumps.

INDUSTRY / OIL & GAS



The chemical industry profits from the **SICcast**[®] - material of DÜCHTING PUMPEN.

As far as this field of application is concerned the high chemical resistance of **SICcast**[®] is of primary importance: its corrosion resistance with respect to acids will even exceed that of Ni-alloys.

These pumps are entirely metal free in all wetted areas - even the single- or double-acting mechanical seals.



Quality through experience

DÜCHTING PUMPEN is a privately owned German company with more than 77 years of experience in the field of advanced centrifugal pumps for use in many different industries.

Our motto “Quality Through Experience” forms the basis of our sophisticated product range. The capabilities of our company in the construction, manufacturing, testing and commissioning of our products is highly respected in the industries we serve.

Our reputation is based on a sustainable company policy, focusing on efficiency, reliability, innovation and thorough customer after-sales service which is provided by partners in the countries where our products are installed.

In order to meet the current demand for highly efficient and reliable products in seawater desalination, DÜCHTING PUMPEN offers optimized high-pressure pumps and energy recovery turbine units. To minimize total energy costs in high pressure seawater desalination plants, we are at your service during both design and operation.





Mineral cast pump

TYPE MC

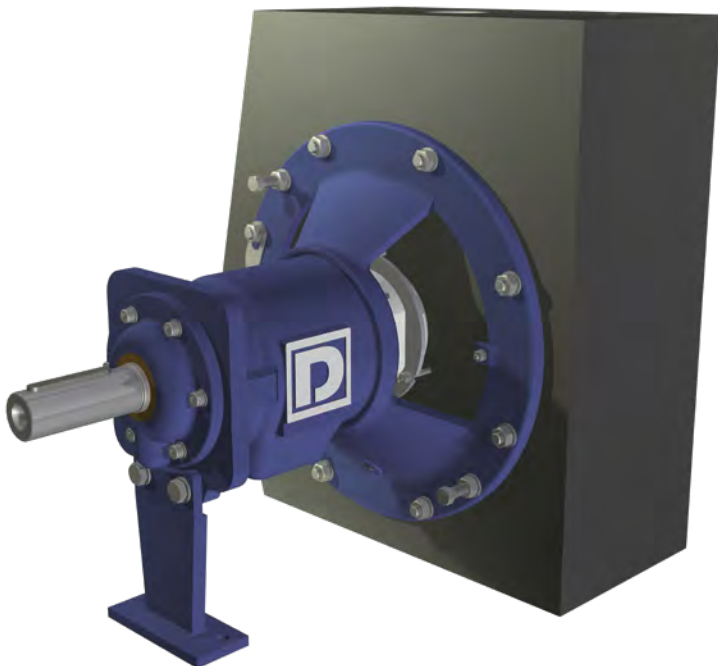
Extremely high abrasion and corrosion resistant.

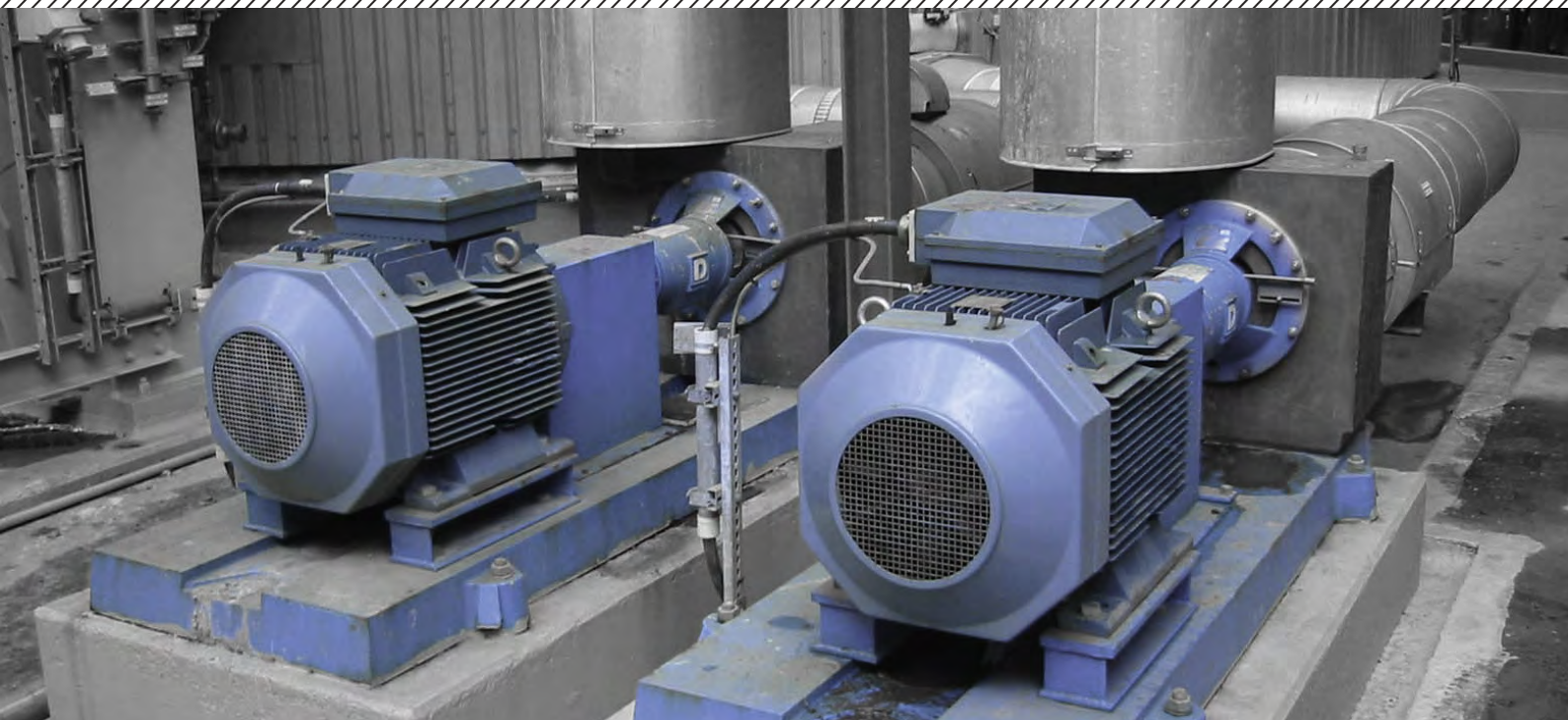


MC Design

Horizontal single-stage centrifugal pump in back pullout design.

- Pumping of abrasive and corrosive liquids
- All components which are in contact with the liquid are made of **SICcast**[®]
- Suction flange: Axial
- Discharge flange: Top (Vertical)
- Open or closed impeller with spatially curved vanes
- Impeller is key driven; reverse rotation (e.g. back-flushing) is possible
- Re-adjustable inclined gap between impeller and volute casing to optimize the efficiency and differential pressure after longer operation
- Single acting, metal free mechanical seal **DÜTEC**[®] with springs located outside of the liquid (other seal types available)
- Oil-lubricated antifriction bearings
- Back pullout design (the complete rotating assembly can be removed while the casing remains on its position)
- In many applications the wear life of **SICcast**[®] greatly exceeds conventional materials
- Available with heavy-duty bearing units for extreme applications
- Optimized design ensures easy maintenance and long service life even under difficult conditions





Fields of Application

Pumping of abrasive and corrosive liquids.

- Flue gas desulfurization
- Incinerators
- Pigment industry
- Chemical industry
- Water treatment
- Seawater desalination
- Fertilizer industry / Potash industry

Materials

Volute casing:	SICcast®
Impeller:	SICcast®
Shaft:	1.4462
Mechanical seal:	Silicon carbide (SIC)

Technical Data

Pump Size:	DN 32 to DN 300 (1 1/4" to 12")
max. Pressure:	10 bar (150 PSI)
max. Flow:	1500 m³/h (6600 gpm)
Total head:	up to 90 m (300 ft)
Rotating Speed:	up to 3600 rpm



Casing Cover

Made of **SICcast**[®] mineral cast.

Impeller

Open or closed impeller with spatially curved vanes constructed in **SICcast**[®] mineral cast.

Volute Casing

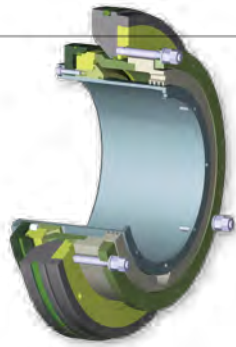
Made of **SICcast**[®] mineral cast.
Flat face flanges.
Unique block design.
Drain connection available.

Bearing Housing

Designed to guarantee the continuous bearing lubrication.
Provided with oil level indicator.

DÜTEC®

Proprietary single acting mechanical seal **DÜTEC®**. The pressure springs arranged outside the space exposed to the liquid.

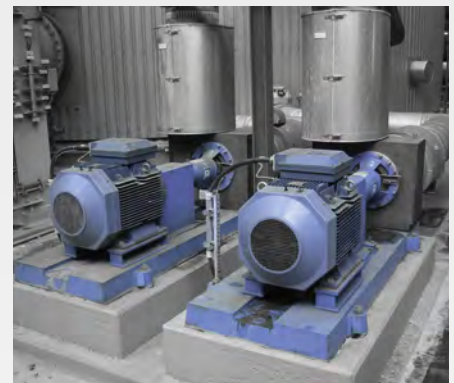


Rotor

Back pullout design to expedite the maintenance work.

Bearings

Oil lubricated antifriction bearings. Cast iron bearing housing provided with maintenance free labyrinth seals to avoid oil leakages.



Operational Experience

Pictures of a Duplex Stainless Steel impeller which has been replaced by a SICcast impeller.



Impeller made of Duplex Stainless Steel
Heavy wear after 11,000 operating hours

Advantages

- Highly wear resistant
- Fully corrosion resistant
- Easy quality control of castings
- Lower noise & vibrations compared to metal

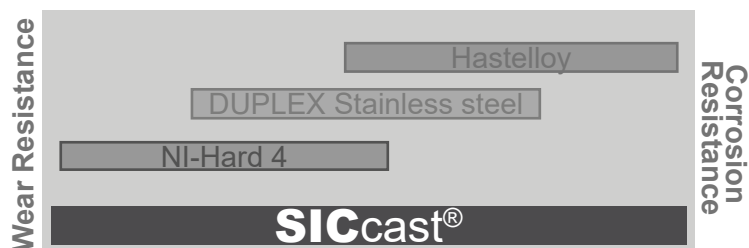


Impeller made of SICcast®
No wear after 24,000 operating hours

Comparison with Metal

In regards of resistance, metals are only a compromise between conflicting requirements.

Having only corrosion and no abrasion, it will be also possible to use hastelloy. It's the same with abrasion only. Abrasion in a neutral medium can be done by using Ni-hard or similar.



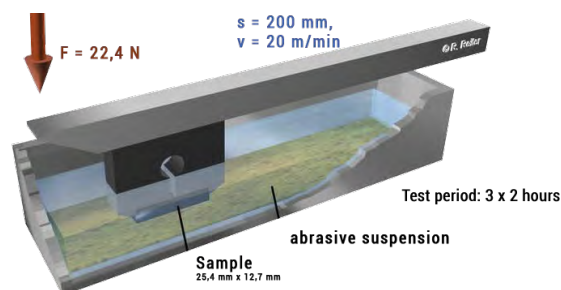
The mineral cast from SICcast® covers both corrosion and abrasion perfectly.

SICcast® materials will be very advantageous if you have solid in combination with a non-neutral medium, a leach or an acid (pH-value 0-12).

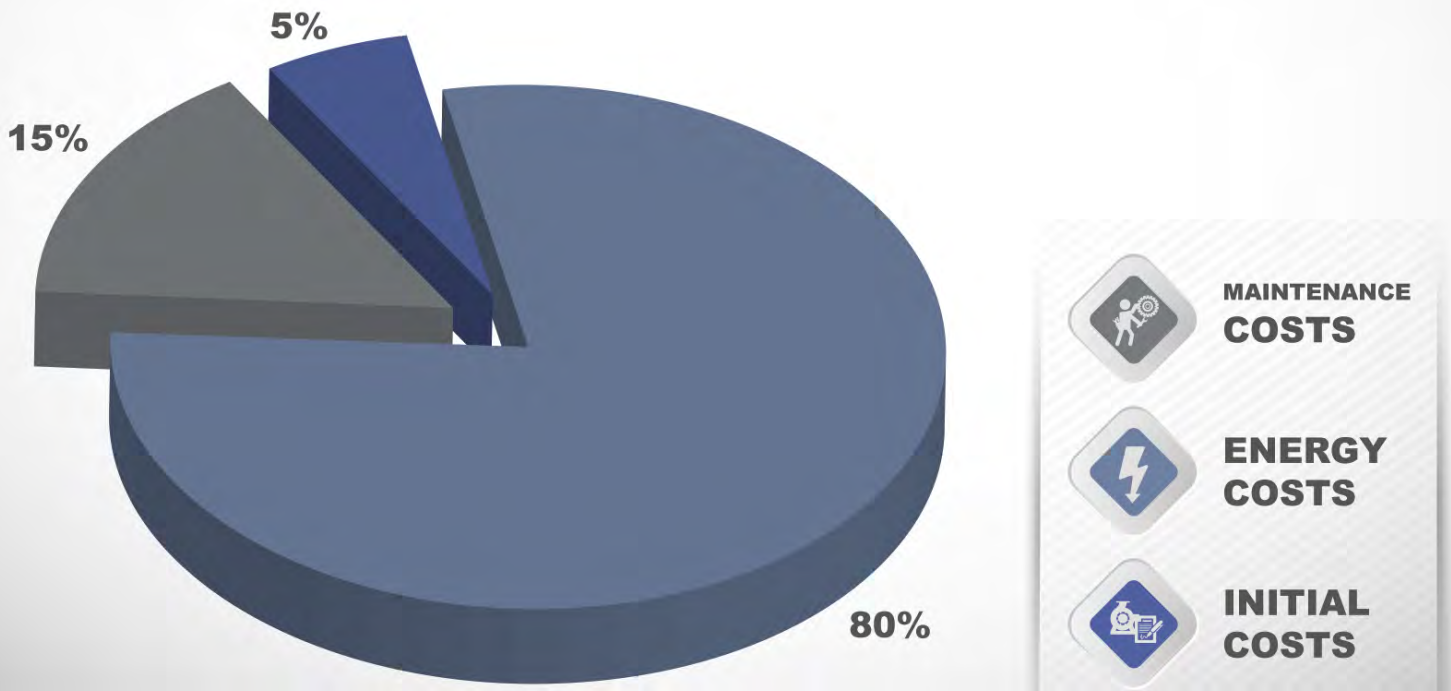
Miller Wear Test

Standard test method for determination of slurry abrasivity.

The Miller Number is an index of the relative abrasivity of slurries. Its primary purpose is to rank the abrasivity of slurries in terms of the wear of a standard reference material. The wear damage on the standard wear block is worse as the Miller Number gets higher.



Material	Loss in weight [mg]	Loss in volume [mm ³]
SICcast EP 135	57,12	22,66
SIConit	75,13	33,10
1.4404	1.528,15	192,22
Alloy 625	1.297,16	152,66
1.4462	1.093,17	140,15
St52	1.023,48	130,38



Life-Cycle-Costs

Average life cycle costs for industrial pumps.

Evaluating the Life-Cycle-Costs will identify the most financially attractive alternative. The initial purchase price is a very small part of the life cycle cost for high usage pumps. Minimizing energy consumption and plant downtime have a big influence on the total Life-Cycle-Costs.

Energy costs

DÜCHTING PUMPEN offers a wide range of impeller sets for high efficiencies.

- ▶ high efficiency leads to low energy costs

Maintenance costs

Robust design leads to long lifetime of the pump parts.

- ▶ low wear leads to low maintenance work and costs

Easy accessible and changeable wear parts lead to short downtime for overhauls.

- ▶ short downtime leads to low maintenance costs





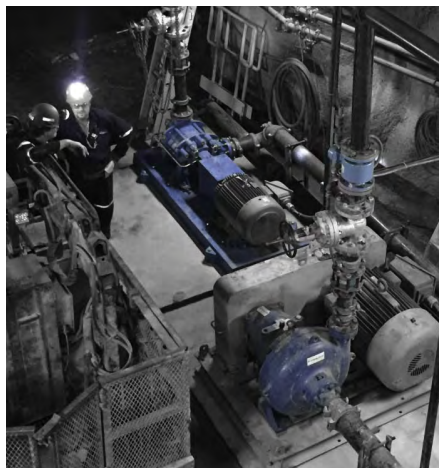
After-Sales-Service & Spare Parts

With its service and spare parts department DÜCHTING PUMPEN offers the full range of After-Sales-Service.

With its own service technicians and several service partners worldwide DÜCHTING Service is everywhere and always available.

Inhouse - Service

- Maintenance
- rebuild & repair
- damage analysis
- performance tests with vibration analysis
- site staff training
- and much more



Site - Service

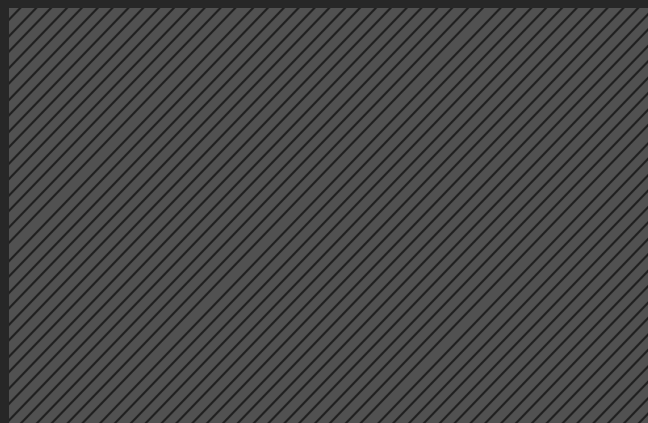
- start-ups
- commissioning assistance
- Revisions
- Repairs
- Troubleshooting
- laser alignment
- vibration & condition analysis
- flow rate measuring
- whole pump rebuild and repair
- mechanical seal exchange
- on-site training
- and much more



Please contact us at:

+49 23 02 / 969 - 0

or send a message to service@duechting.com



DÜCHTING PUMPEN Maschinenfabrik GmbH & Co. KG



Wilhelm Düchting Str. 22
58453 Witten, Germany



+49 2302 / 969 - 0



+49 2302 / 690 - 443



www.DUECHTING.com



info@duechting.com

