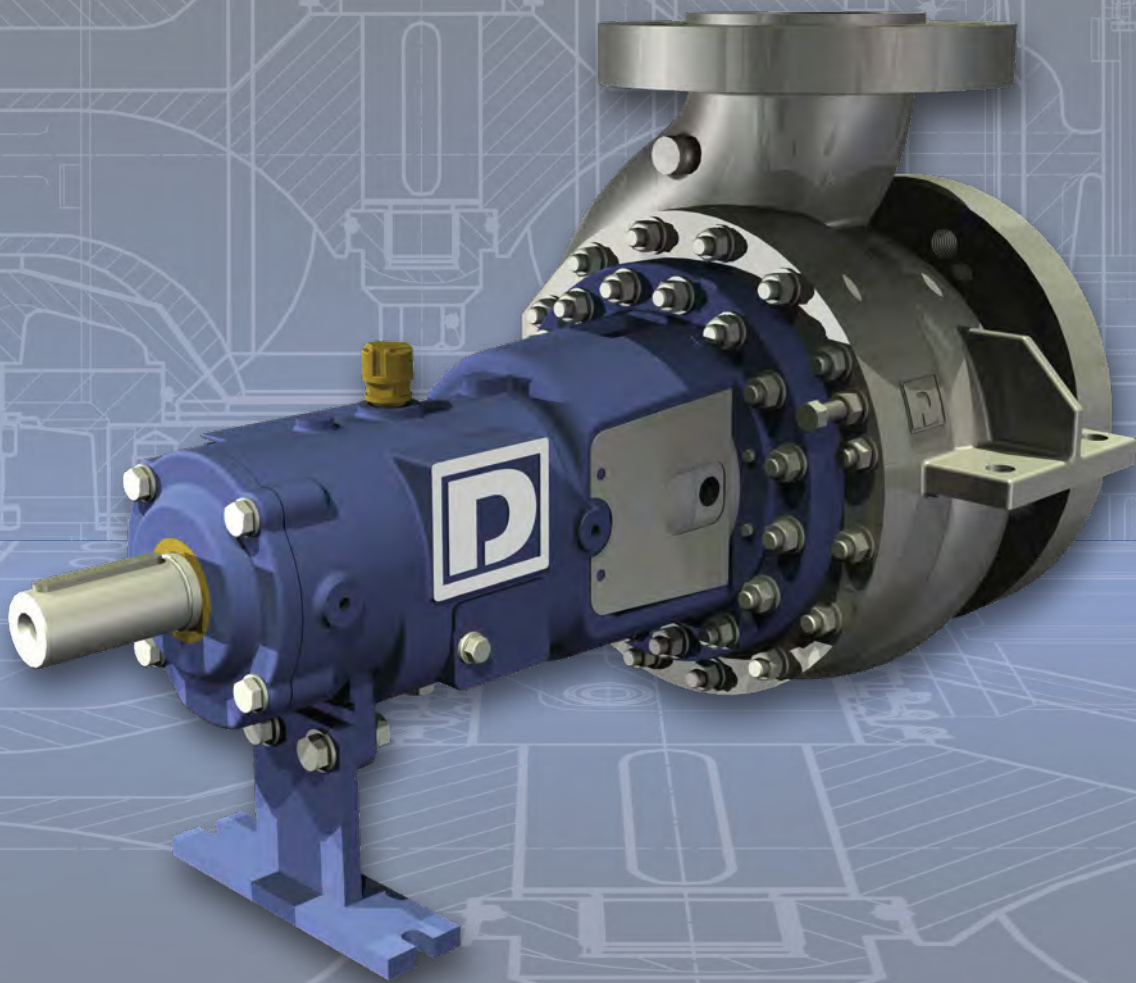




DÜCHTING
PUMPEN

Product Overview

TYPE IP



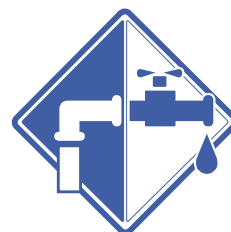
FLUE GAS DESULFURIZATION

The flue gas cleaning in Germany started with the adoption of the „Großfeuerungsverordnung“ - a regulation for open fire - in 1982. From the very beginning DÜCHTING PUMPEN took part in this business and today has one of the largest populations in European power stations. With the development of the material **SICcast**[®] now almost every FGD pump is built completely in **SICcast**[®]. Through this unique and innovative technology our products are increasingly favored beyond the borders of Europe.



WATER TREATMENT

DÜCHTING PUMPEN has worked in desalination with high-pressure centrifugal pumps in reverse osmosis now since the early 90s. While the demand for higher quantities and pressures has risen over the past years DP has kept up with the development and can now offer high-pressure pumps, including energy recovery units. The materials used for these pumps have been proven in numerous applications and the performance data has been adjusted to market demands by means of CFX programs.



MINING

Since the early 50s DÜCHTING has supplied pumps to the mining industry, especially German hard coal mining - at first only as maintenance and primarily with respect to underground mining. In the following years new pumps and wear-resistant centrifugal pumps for the processing of coal were added. Today DÜCHTING PUMPEN covers the entire market for centrifugal pumps in mining including high-pressure cooling centrifugal pumps.



INDUSTRY / OIL & GAS

The chemical industry profits from the **SICcast**[®] - material of DÜCHTING PUMPEN.

As far as this field of application is concerned the high chemical resistance of **SICcast**[®] is of primary importance: its corrosion resistance with respect to acids will even exceed that of Ni-alloys.

These pumps are entirely metal free in all wetted areas - even the single- or double-acting mechanical seals.





Quality through experience

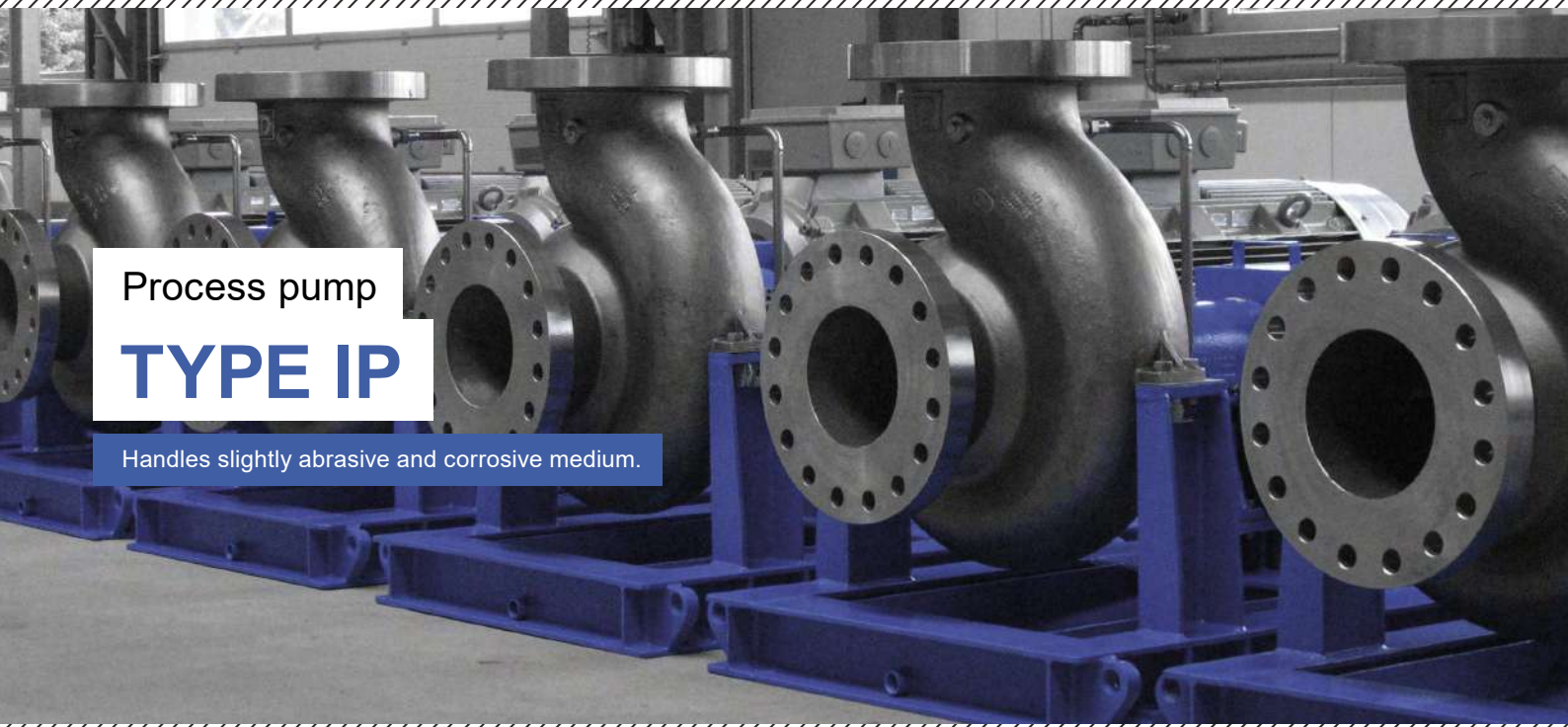
DÜCHTING PUMPEN is a privately owned German company with more than 77 years of experience in the field of advanced centrifugal pumps for use in many different industries.

Our motto “Quality Through Experience” forms the basis of our sophisticated product range. The capabilities of our company in the construction, manufacturing, testing and commissioning of our products is highly respected in the industries we serve.

Our reputation is based on a sustainable company policy, focusing on efficiency, reliability, innovation and thorough customer after-sales service which is provided by partners in the countries where our products are installed.

In order to meet the current demand for highly efficient and reliable products in seawater desalination, DÜCHTING PUMPEN offers optimized high-pressure pumps and energy recovery turbine units. To minimize total energy costs in high pressure seawater desalination plants, we are at your service during both design and operation.





Process pump

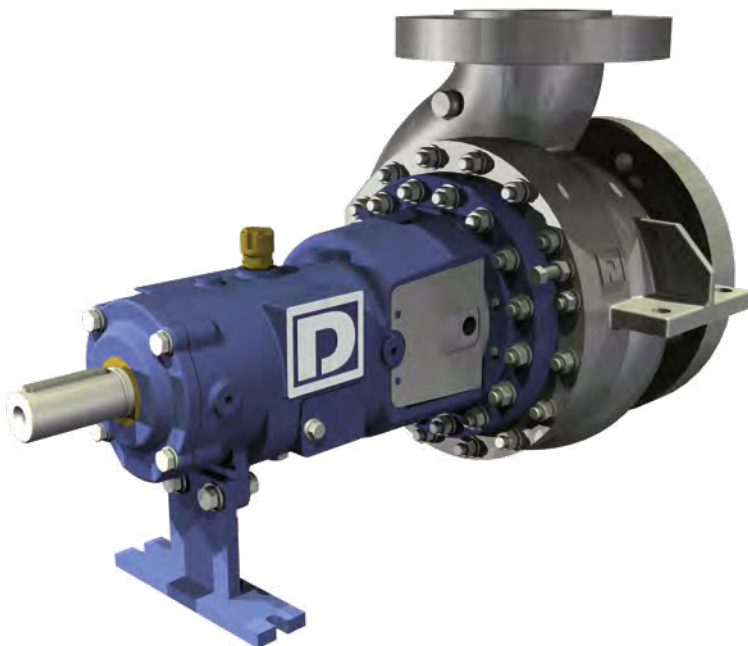
TYPE IP

Handles slightly abrasive and corrosive medium.

IP Design

Single stage end-suction, centrifugal pump.

- Horizontal centerline mounted
- Back pullout design (the complete rotating assembly can be removed while the casing remains on its position)
- Continuous operation in industrial processes for pumping clean and corrosive liquids
- Double volute casing for extended bearing and seal life time
- Wear rings in composite material to maintain best efficiency and reliability
- Pump casing design up to 100 bar
- Suction pressure up to 80 bar
- Available for hot liquid applications
- Oil or grease lubricated bearings
- Cartridge mechanical seal, seal plan as per API
- Vertical installation optional available
- Design in accordance with API 610 / ISO 13709 if specified





Fields of Application

Suitable for handling of slightly abrasive and corrosive liquids.

- Pressure boosting systems in industrial processes
- Water supply, and water treatment
- Seawater desalination
- Hot water applications
- Oil & Gas - Applications
- Feed water circulation

Materials

Available in almost any metal from cast iron to SUPER DUPLEX stainless steel.

The materials are carefully selected depending on the application, the pumped liquid and the combinations of materials adapted to the respective conditions of use.

Technical Data

Pump Size:	DN 50 to DN 450 (2 1/2" to 18")
max. Pressure:	100 bar / 15 bar (1450 PSI / 220 PSI)
max. Flow:	4200 m³/h (18500 gpm)
Total head:	up to 220 m (720 ft)
Rotating Speed:	up to 3600 rpm



Shaft

Critical shaft speed above operating speed.

Seal

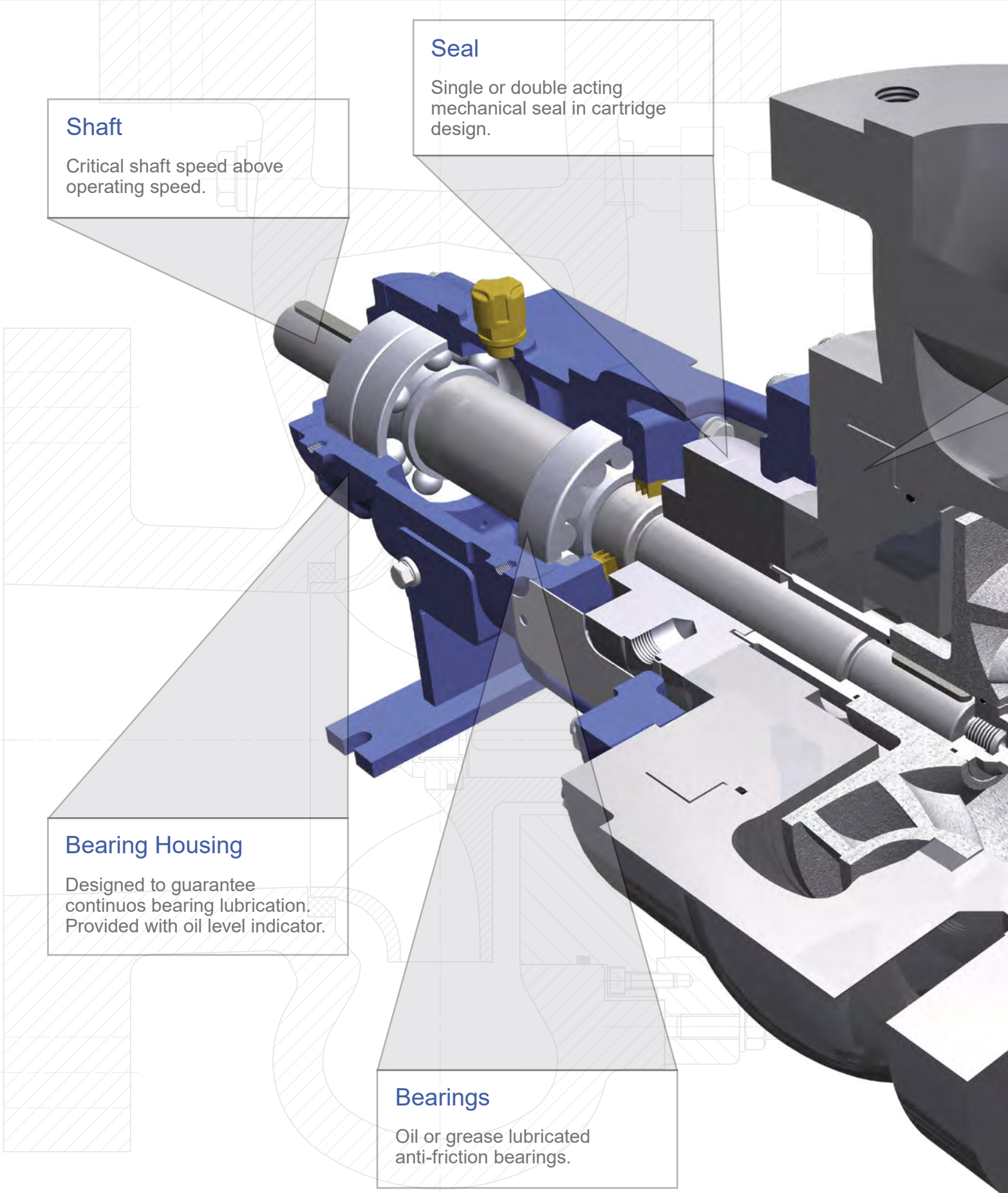
Single or double acting mechanical seal in cartridge design.

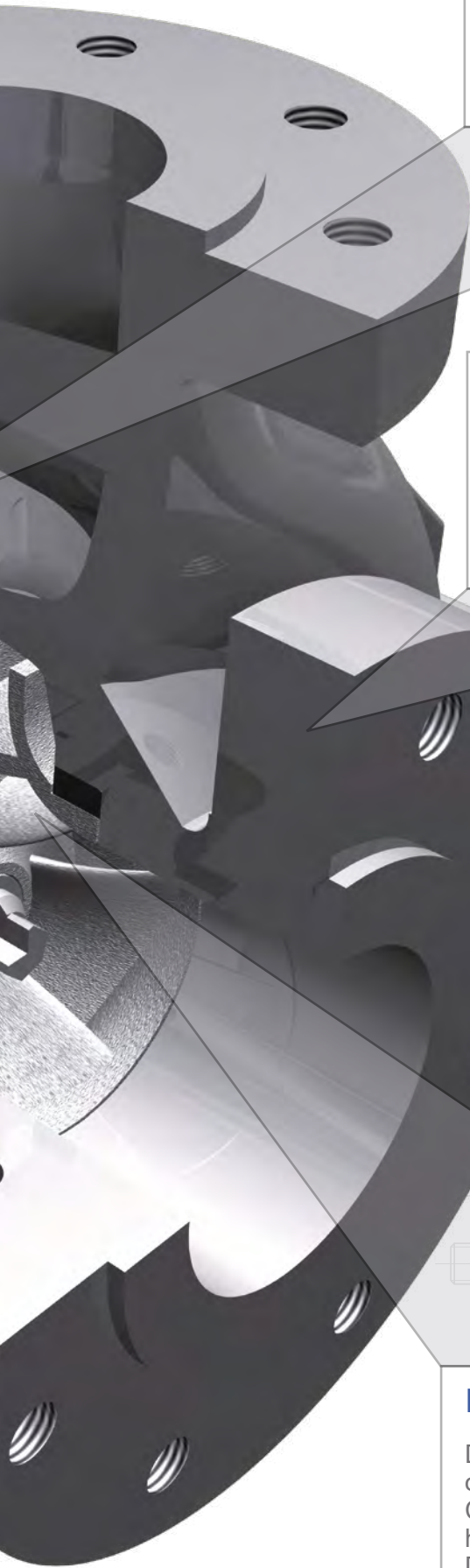
Bearing Housing

Designed to guarantee continuous bearing lubrication. Provided with oil level indicator.

Bearings

Oil or grease lubricated anti-friction bearings.



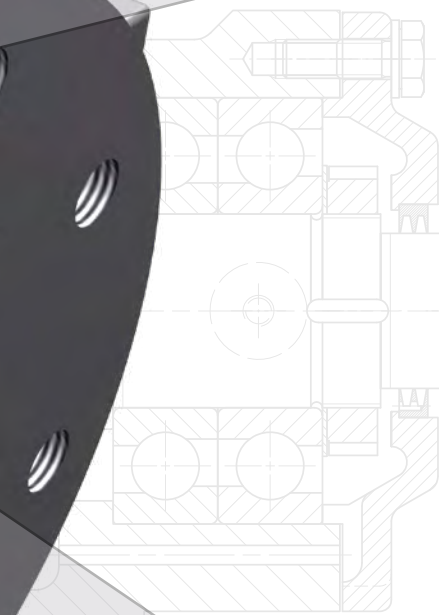


Wear rings

Replaceable rings in composite material to maintain best efficiency and reliability.

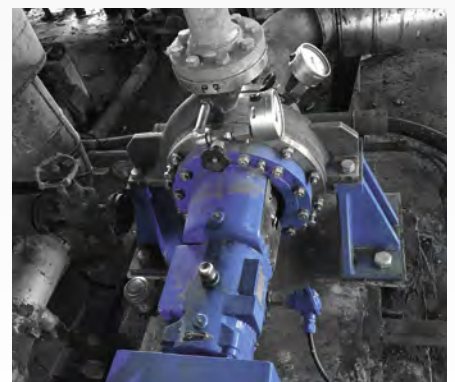
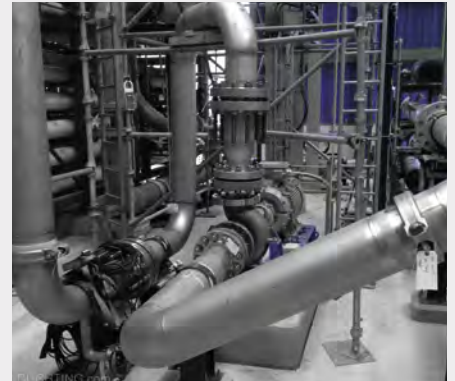
Volute Casing

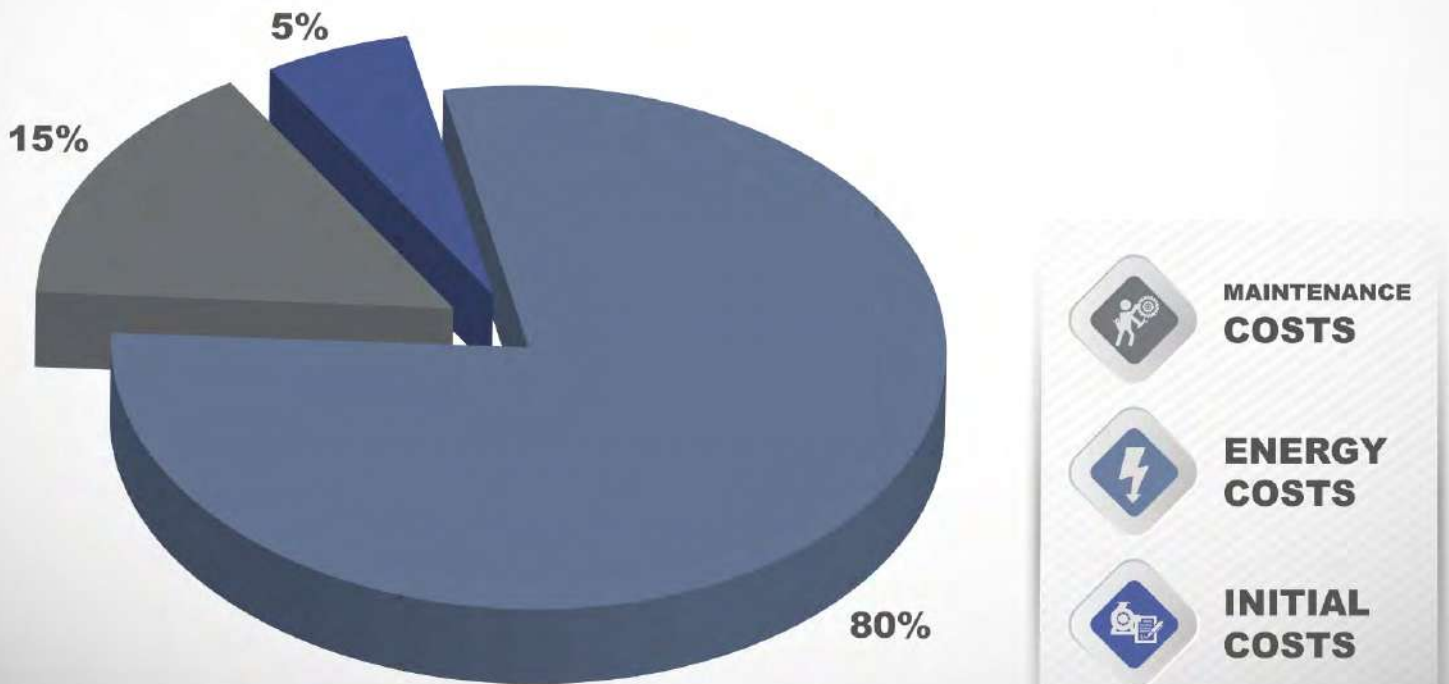
Optimized by numerical calculations to achieve best flow conditions.
Double volute casing to reduce the radial thrust.



Impeller

Design in consideration of optimal specific speed.
Cast in ceramic moulds for highest surface quality.
Different impeller sets available for every pump size.





Life-Cycle-Costs

Average life cycle costs for industrial pumps.

Evaluating the Life-Cycle-Costs will identify the most financially attractive alternative. The initial purchase price is a very small part of the life cycle cost for high usage pumps. Minimizing energy consumption and plant downtime have a big influence on the total Life-Cycle-Costs.

Energy costs

DÜCHTING PUMPEN offers a wide range of impeller sets for high efficiencies.

- ▶ high efficiency leads to low energy costs

Maintenance costs

Robust design leads to long lifetime of the pump parts.

- ▶ low wear leads to low maintenance work and costs

Easy accessible and changeable wear parts lead to short downtime for overhauls.

- ▶ short downtime leads to low maintenance costs





After-Sales-Service & Spare Parts

With its service and spare parts department DÜCHTING PUMPEN offers the full range of After-Sales-Service.

With its own service technicians and several service partners worldwide DÜCHTING Service is everywhere and always available.

Inhouse - Service

- Maintenance
- rebuild & repair
- damage analysis
- performance tests with vibration analysis
- site staff training
- and much more



Site - Service

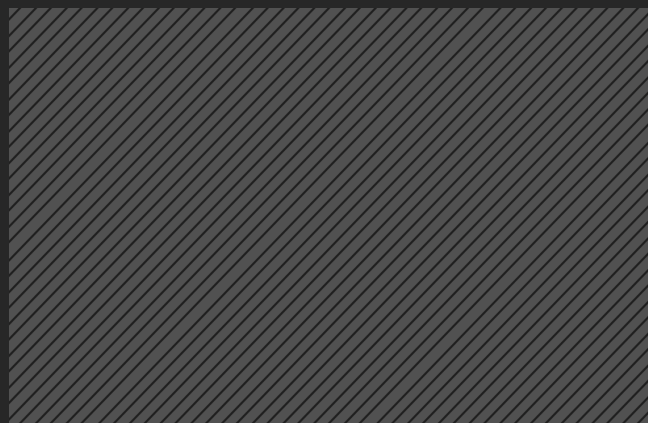
- start-ups
- commissioning assistance
- Revisions
- Repairs
- Troubleshooting
- laser alignment
- vibration & condition analysis
- flow rate measuring
- whole pump rebuild and repair
- mechanical seal exchange
- on-site training
- and much more



Please contact us at:

+49 23 02 / 969 - 0

or send a message to service@duechting.com



DÜCHTING PUMPEN Maschinenfabrik GmbH & Co. KG



Wilhelm Düchting Str. 22
58453 Witten, Germany



+49 2302 / 969 - 0



+49 2302 / 690 - 443



www.DUECHTING.com



info@duechting.com

