

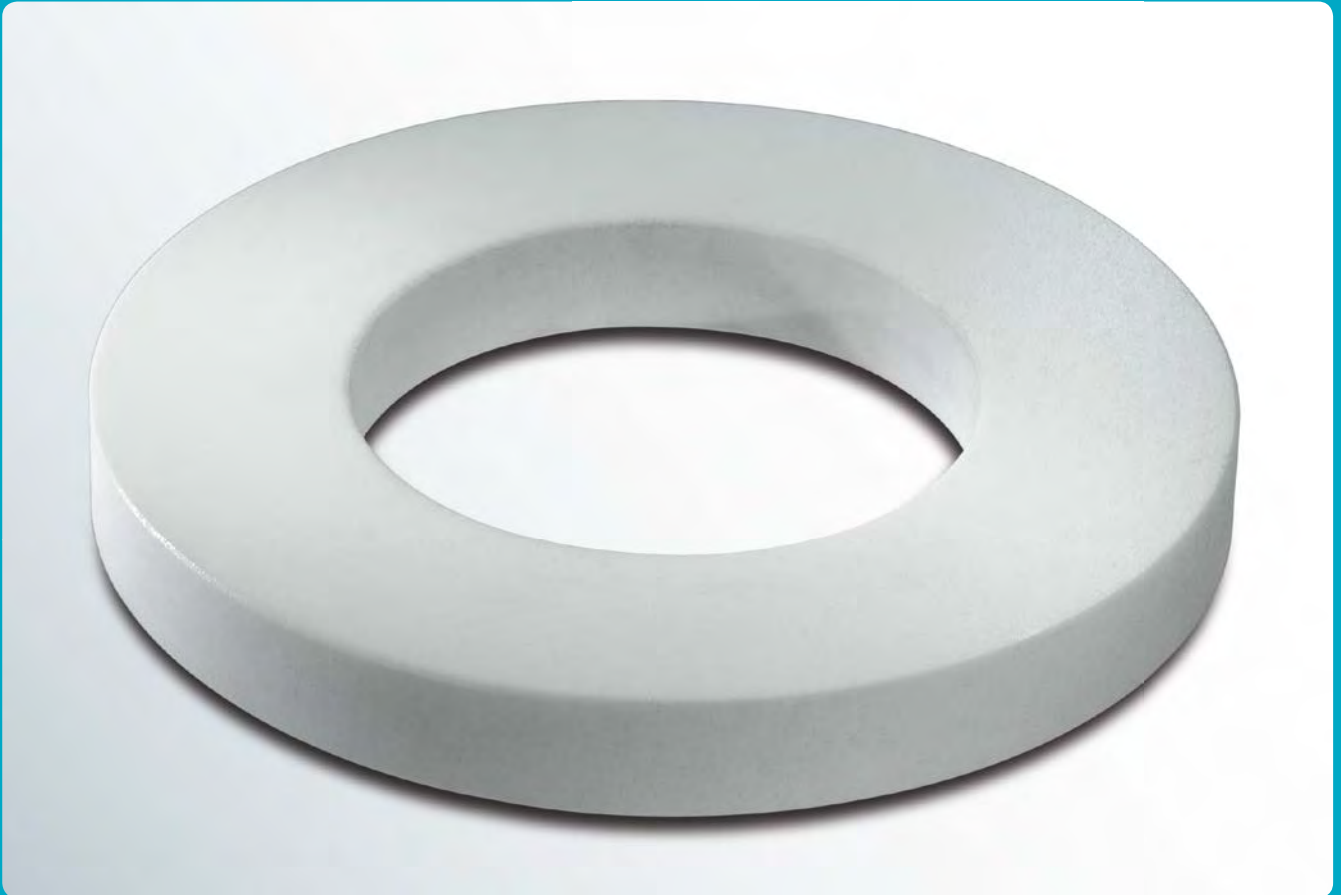


Spacers



Spacers Form F (PN 10)

Flexible up to the last millimetre! For total lengths up to 25 mm we recommend Spacers Form F made of solid PTFE.



Spacers Form F (PN 10)

Materials:

- PTFE (virgin or conductive)
- PP (up to nominal pipe size DN 300)

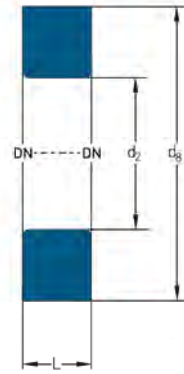
Other pressure levels:

- PN 16
- PN 25
- PN 40

Optional extras:

- reinforcement ring
- filled PTFE

Spacers Form F are also available as **Inclined Spacers** with various angles.



DN	L (mm)		d ₂ ≈ (mm)	d ₈ (mm)	Weights (ca. g/mm)
	min.	max.			
15	10	15	16	50	3.8
20	10	20	16	60	5.6
25	10	20	22	70	7.5
32	10	20	31	82	9.7
40	10	20	37	92	12.0
50	10	20	48	107	15.4
65	10	20	64	127	20.3
80	10	20	76	142	24.3
100	10	20	101	162	27.1
125	10	20	125	192	35.9
150	10	20	153	218	40.7
200	10	20	201	273	57.6
250	10	20	254	328	72.7
300	10	20	303	378	86.2
350	10	25	333	438	136.7
400	10	25	382	488	155.7
450	10	25	430	536	172.9
500	10	25	480	594	206.7

Different nominal pipe sizes and total lengths on request.

L = Total length

d₂ = Inner diameter

d₈ = Outer diameter

Technical data valid for the pressure level PN 10.

DN	Lining thickness		Possible vacuum		
	standard	thick-walled	23° C	150° C	200° C
25	●	●	▬	▬	▬
40	●	●	▬	▬	▬
50	●	●	▬	▬	▬
80	●	●	▬	▬	▬
100	●	●	▬	▬	▬
150	●	●	▬	▬	▬
200	●	●	▬	▬	▬
250	●	●	▬	▬	▬
300	●	●	▬	▬	▬

Vacuum resistance:

▬ = full vacuum

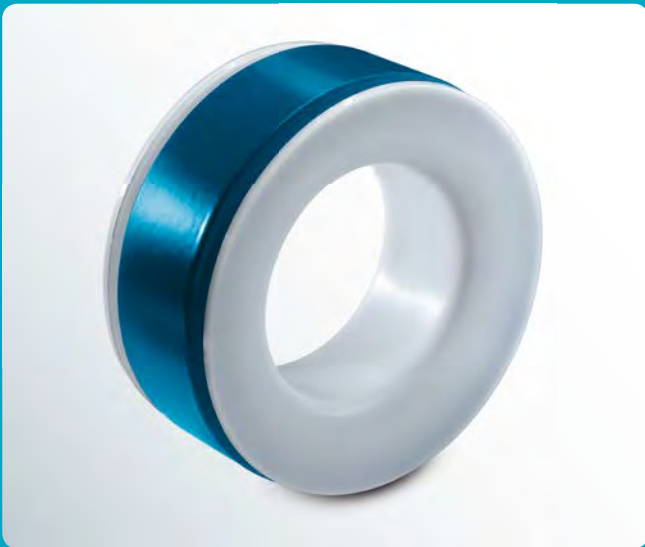
▬ = limited vacuum

▬ = no vacuum

Please refer to the next higher nominal pipe size if your nominal pipe size is not listed.

Spacers Form G (PN 10)

For total lengths from 10 – 100 mm we reinforce the Spacers Form G with a resilient metal core.



Spacers Form G (PN 10)

Materials:

- carbon steel
- stainless steel

Lining materials:

- PTFE (virgin or conductive)
- PP (up to nominal pipe size DN 300)

Other pressure levels:

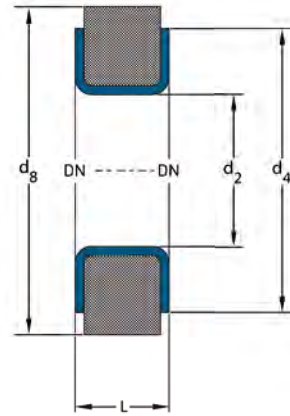
- PN 16
- PN 25
- PN 40

Special features:

- earthing stud/lug

Optional extras:

- final painting



DN	L (mm)		d ₂ ≈ (mm)	d ₄ (mm)	d ₈ (mm)	Weights at L _{max} (ca. kg/pc.)
	min.	max.				
15	10	60	16	45	50	0.7
20	10	60	16	58	60	1.1
25	10	60	22	68	70	1.4
32	10	60	31	78	82	1.9
40	10	60	37	88	92	2.3
50	10	60	48	102	107	3.0
65	10	60	64	122	127	3.9
80	10	70	76	138	142	5.5
100	15	70	101	158	162	6.1
125	15	70	125	188	192	7.8
150	20	80	153	212	218	10.0
200	20	80	201	268	273	14.0
250	20	90	254	320	328	20.0
300	20	90	303	370	378	23.7
350	25	90	333	430	438	37.6
400	25	90	382	482	488	44.2
450	25	100	430	532	536	55.0
500	25	100	480	585	594	65.9

Different nominal pipe sizes and total lengths on request.

L = Total length
d₂ = Inner diameter
d₄ = Raised face diameter
d₈ = Outer diameter
Technical data valid for the pressure level PN 10.

DN	Lining thickness		Possible vacuum		
	standard	thick-walled	23° C	150° C	200° C
25	●	●	☐	☐	☐
40	●	●	☐	☐	☐
50	●	●	☐	☐	☐
80	●	●	☐	☐	☐
100	●	●	☐	☐	☐
150	●	●	☐	☐	☐
200	●	●	☐	☐	☐
250	●	●	☐	☐	☐
300	●	●	☐	☐	☐

Vacuum resistance:

- ☐ = full vacuum
- ☐ = limited vacuum
- ☐ = no vacuum

Please refer to the next higher nominal pipe size if your nominal pipe size is not listed.

Spacers Form H (PN 10)

Spacers Form H with a total length up to 250 mm consist of a pressure-resistant, but lightweight metal core with interior lining.



Spacers Form H (PN 10)

Materials:

- carbon steel
- stainless steel

Lining materials:

- PTFE (virgin or conductive)
- PP (up to nominal pipe size DN 300)

Other pressure levels:

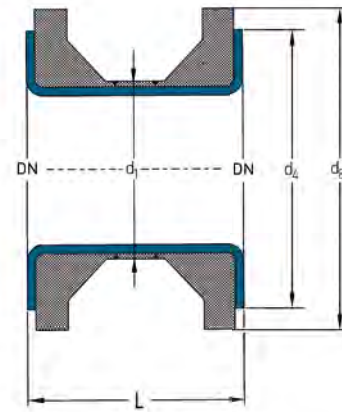
- PN 16
- PN 25
- PN 40

Special features:

- earthing stud/lug
- vent hole extension

Optional extras:

- final painting
- non-destructive testing



DN	L (mm)		d ₁ (mm)	d ₄ (mm)	d ₈ (mm)	Weights at L _{max} (ca. kg/pc.)
	min.	max.				
15	60	100	26.9	45	45	0.4
20	60	100	26.9	58	60	0.8
25	60	100	33.7	68	70	1.0
32	60	100	42.4	78	82	1.3
40	60	100	48.3	88	92	1.6
50	60	100	60.3	102	107	2.1
65	60	100	76.1	122	127	2.8
80	70	125	88.9	138	142	3.7
100	70	125	114.3	158	162	4.7
125	70	150	139.7	188	192	6.7
150	80	150	168.3	212	218	8.2
200	80	200	219.1	268	273	14.5
250	80	200	273.0	320	328	19.0
300	80	200	323.9	370	378	23.4
350	80	250	355.6	430	438	38.3
400	90	250	406.4	482	488	46.8
450	100	250	457.0	532	532	50.9
500	100	250	508.0	585	594	59.9

Different nominal pipe sizes
and total lengths on request.

L = Total length

d₁ = Outer diameter of the steel pipe

d₄ = Raised face diameter

d₈ = Outer diameter

Technical data valid for the pressure level PN 10.

DN	Lining thickness		Possible vacuum		
	standard	thick-walled	23° C	150° C	200° C
25	●	●	▬	▬	▬
40	●	●	▬	▬	▬
50	●	●	▬	▬	▬
80	●	●	▬	▬	▬
100	●	●	▬	▬	▬
150	●	●	▬	▬	▬
200	●	●	▬	▬	▬
250	●	●	▬	▬	▬
300	●	●	▬	▬	▬

Vacuum resistance:

▬ = full vacuum

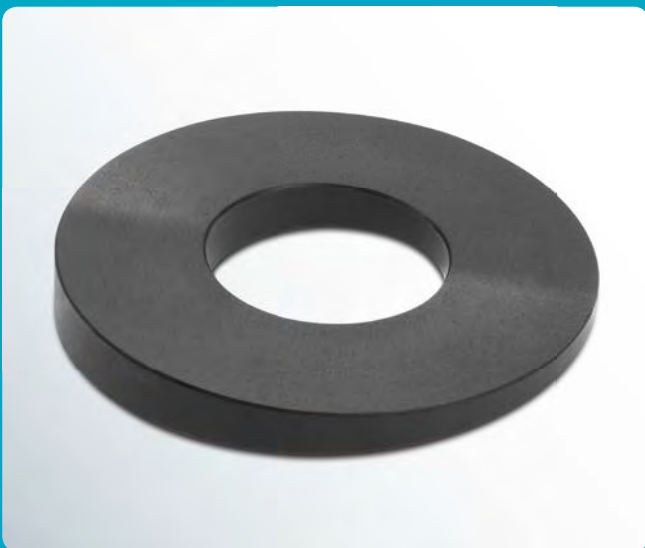
▬ = limited vacuum

▬ = no vacuum

Please refer to the next
higher nominal pipe size
if your nominal pipe size
is not listed.

Inclined Spacers (PN 10)

Flexible in every situation! The Inclined Spacers can be delivered in any angle, tapered on one side only or on both sides.



Inclined Spacers (PN 10)

Material:

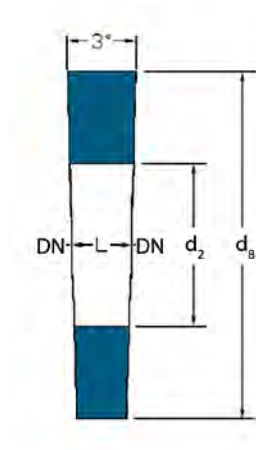
- PTFE (virgin or conductive)

Other pressure levels:

- PN 16
- PN 25
- PN 40

The standard angle for Inclined Spacer is 3°, other angles on request.

DN	L (mm)	d ₂ ≈ (mm)	d ₈ (mm)	Weights (ca. kg/pc.)
25	15	22	70	0.1
32	15	31	82	0.1
40	15	37	92	0.2
50	20	48	107	0.3
65	20	64	127	0.4
80	20	76	142	0.5
100	25	101	162	0.7
125	25	125	192	0.9
150	35	153	218	1.4
200	35	201	273	2.0



Different nominal pipe sizes and total lengths on request.

L = Total length
d₂ = Inner diameter
d₈ = Outer diameter
Technical data valid for the pressure level PN 10.

DN	Lining thickness		Possible vacuum		
	standard	thick-walled	23° C	150° C	200° C
25	●	●	☐	☐	☐
40	●	●	☐	☐	☐
50	●	●	☐	☐	☐
80	●	●	☐	☐	☐
100	●	●	☐	☐	☐
150	●	●	☐	☐	☐
200	●	●	☐	☐	☐

Vacuum resistance:

- ☐ = full vacuum
- ☐ = limited vacuum
- ☐ = no vacuum

Please refer to the next higher nominal pipe size if your nominal pipe size is not listed.